

Galileo LED
design Emanuele Ricci

Galileo LED e Galileo Mini LED

Technology for the Light

Usare il meglio della tecnologia per migliorare la performance di un prodotto in termini di potere illuminante ed efficienza energetica: questo l'obiettivo del progetto Galileo LED.

Grazie alla ricerca sulle nuove fonti luminose ed alla progettazione accurata, Lumina ha saputo rinnovare Galileo, mantenendo inalterato il design del suo prezioso diffusore. Il cristallo di Galileo, infatti, si può montare sia sul modello tradizionale sia sulla nuova versione LED.

Using the best that technology can offer to improve the product performance both as regards lighting power and energy efficiency: this is the target of the Galileo LED project.

Thanks to the research on the new lighting sources and thorough design, Lumina has managed to renew Galileo, respecting the original design of its precious shade. As a matter of fact, Galileo crystal fits the traditional model as well as the brand new LED version.



Galileo LED

Galileo LED

Crystal and Steel

La tecnologia di lavorazione dei cristalli e la conoscenza delle leggi della rifrazione ottica sono alla base della magia di Galileo e del suo fascino elegante. I raggi luminosi attraversano il diffusore, scompaiono dalla vista dell'osservatore e vengono proiettati sulla superficie sottostante, creando delle isole di luce.

La scocca compatta ed elegante si integra perfettamente con la linea pulita del cristallo, i LED ed il sistema di dissipazione del calore.

Il fascio luminoso dei LED vanta una notevole efficienza luminosa rispetto alle fonti alogene e rende Galileo LED un prodotto esclusivo ed inimitabile.

The Crystal tooling technology and the laws of optical reflections are the keys of Galileo's magic and its elegance. The rays of light pass through the shade and disappear from the observer's sight to be projected on the surface below, creating light islands.

The cover, compact and elegant, perfectly matches the clean line of the crystal, the LED and the heat sink system .

The LED light beam has a far better luminous efficiency compared to the halogen sources and makes Galileo LED an exclusive and inimitable product.



Galileo L&L



Galileo LED



Galileo LED

Galileo LED

the EcoTech performance

Galileo LED

- TOP quality LED:
 - 3000°K - Ra83
 - 50.000 hours life min
 - 18 Watt - 1800 lm
- Suitable for Home Lighting Control
- Suitable for all voltages: 110V/220V/240V
- Recyclable raw materials (aluminum, steel and glass)
- Compact and recyclable packaging
- Dimmable

Galileo Mini LED

- TOP quality LED:
 - 3000°K - Ra83
 - 50.000 hours life min
 - 8 Watt - 780 lm
- Suitable for Home Lighting Control
- Suitable for all voltages: 110V/220V/240V
- Recyclable raw materials (aluminum, steel and glass)
- Compact and recyclable packaging
- Dimmable



Galileo LED
Ø 20 cm



Galileo Mini LED
Ø 12 cm

Galileo LED

Galileo LED

Components

• 1

Dissipatore - Alloggio LED
Heat Sink - LED board

• 2

Ghiera di fissaggio in alluminio
Aluminum locking ring

• 3

Scocca in acciaio nickelato
Nickel plated steel cover



• 3



• 2



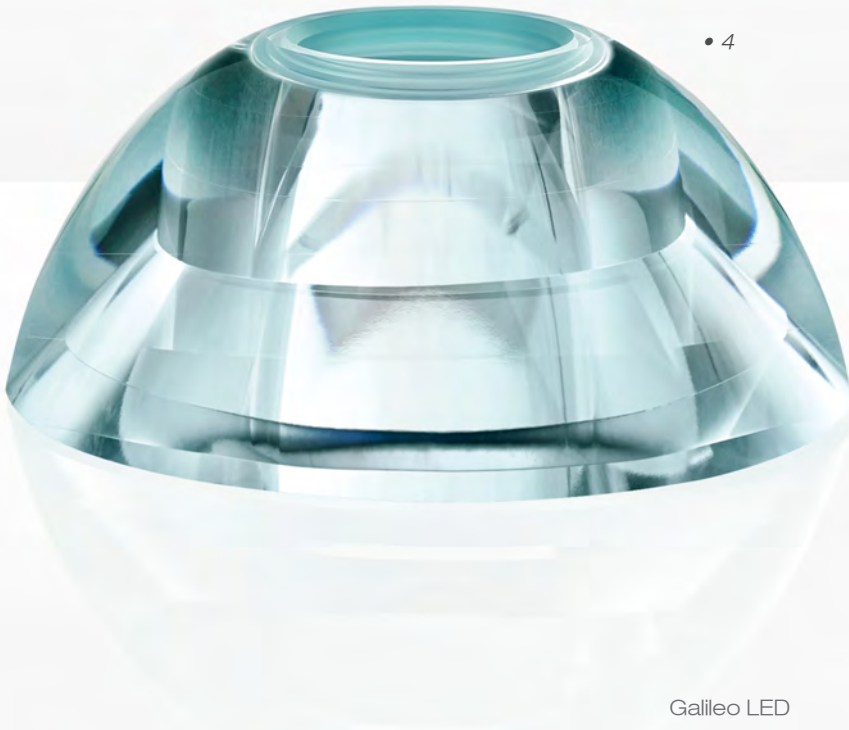
• 4
Diffusore in cristallo
Crystal shade

• 5
Rosone in acciaio
Steel ceiling rose



• 5

• 4



Galileo LED

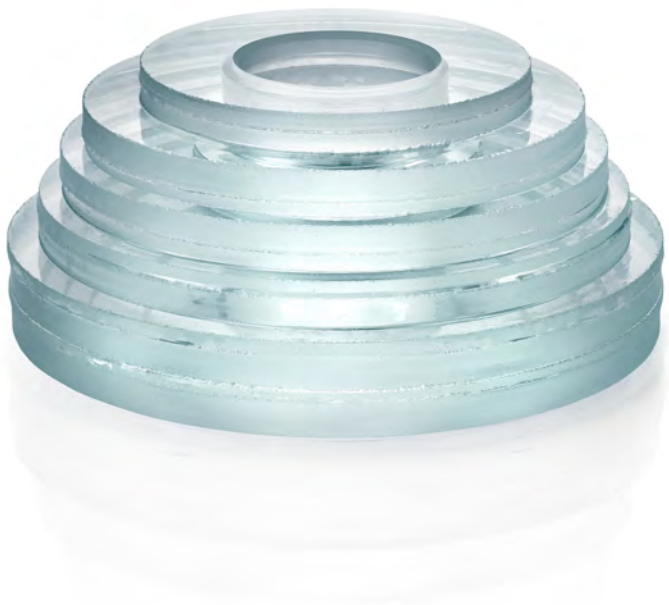
Galileo LED

Crystal

Unico nel suo genere, il diffusore di Galileo è composto da 6 lastre di cristallo purissimo (4 per Galileo mini) sovrapposte ed incollate con resine speciali.

Questo corpo convesso, ancora grezzo, viene poi sagomato, tornito con macchine ad altissima precisione e lucidato con cura artigianale per conferire leggerezza visiva al prezioso cristallo di Galileo.

Unique in its kind, Galileo shade is made of 6 sheets of extra-clear crystal (4 sheets for Galileo mini) assembled and glued with special resins. This convex piece, still rough, is then shaped, turned by high-precision machines, and polished carefully to convey visual lightness to the precious Galileo crystal.



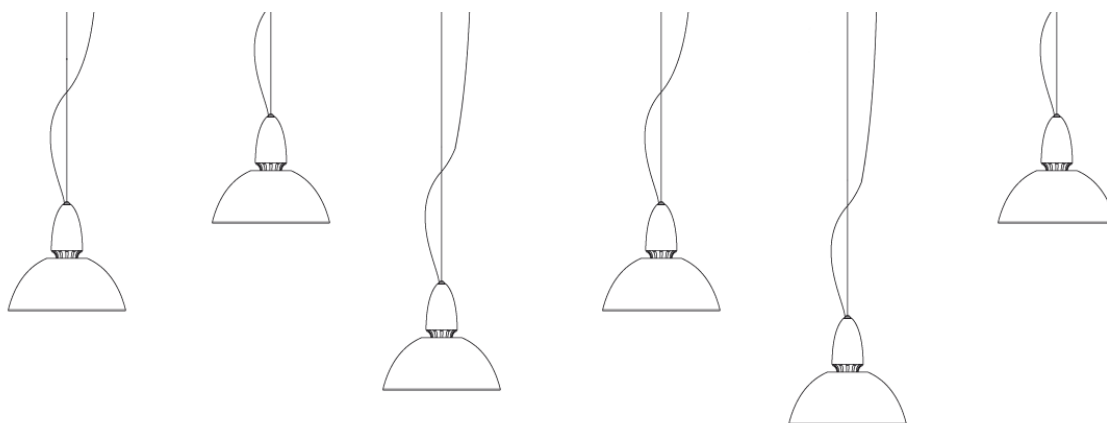
1 • Prime fasi di lavorazione: sagomatura e incollaggio
First manufacturing process: shaping and gluing



2 • Fasi conclusive: tornitura e lucidatura
Final manufacturing process: turning and polishing

Galileo LED

Compositions



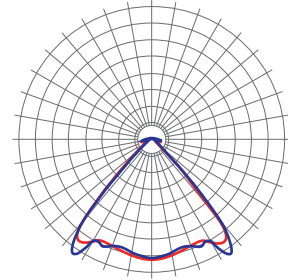
Galileo LED e Galileo Mini LED sono utilizzabili singolarmente o in composizioni multiple, adatte sia a progetti contract sia ad ambienti domestici.

Lumina è a vostra disposizione per studiare soluzioni personalizzate.

Galileo LED and Galileo Mini LED can be used as a single light or in multiple compositions. These suspensions are suitable both for contract projects as well as domestic installations.

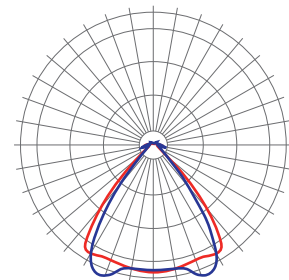
Lumina will be pleased to study with you bespoke solutions.

Technical Data



Photometric files available on www.lumina.it

	Code	Source	Finish	Certification
Galileo LED Dimmable	380LD	18W LED 3000°K - 1800lm Energy Class A / A++	44	CE



Photometric files available on www.lumina.it

	Code	Fig.	Source	Finish	Certification
Galileo Mini LED Switch	383L	a	8W LED 3000°K - 780lm	44	CE
Galileo Mini LED Dimmable	383LD	b	Energy Class A / A++		

Power supply and decentral mount included



LUMINA ITALIA Srl

via Casorezzo, 63 • 20010 Arluno (Milano)
Tel. +39 02 903752 • Fax +39 02 90376655

LUMINA SCHWEIZ GmbH

Bergstrasse 1/3 • CH-4513 Langendorf
Tel. +41 032 6821959 • Fax +41 032 6823338

info@lumina.it

